



*Bring Your ideas  
Into Reality*

## Transparent LED Display

### STC Series Design

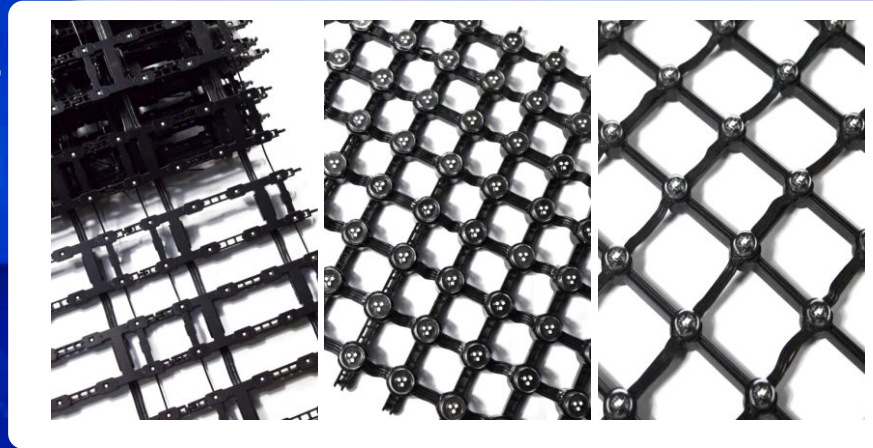
(45/50/55/62.5/75/100mm)

- Module Size: 500\*125 mm
- Cabinet Size: 1000\*1000 mm

# STC Series Design

Our led mesh display designed for display texts, video, and images on large building facades at a favorable price make the buildings different from others and obvious to attract people day or night. Rather than heavy led screens led mesh screen is better in a lightweight, convenient installation and less structure. Many pitches are available from P40 to P300mm, in different brightness.

MileStrong STC series is flexible, lightweight, and easy to install and maintain, 70% lower cost in structure & labor than normal led display,



## STC Series Features

Nationstar LED make it more stable.

Waterproof IP66. Pixel pitch from 40mm -300mm available.

High brightness up to 6500cd/sqm, suitable for any outdoor application.

90% high transparency, fully meet the application requirements of outdoor glass wall.

It's flexible, can do all kinds of artistic design, such as: spherical, Christmas tree and so on



## Stc Series Advantage

Naturally match the building shape via the cost effective labor & materials without supportive structure like complicated steel.



# Super Cool Display Flexible

LED curtain display for long distance (>30m) view advertising display.



# High Transparency

The high transparency of led mesh screen reduces the occlusion of the viewing angle of the building, at the same time, the light transmission is also increased. When the screen light, you could see the advertising video. When it's off, it's like a building curtain wall far away

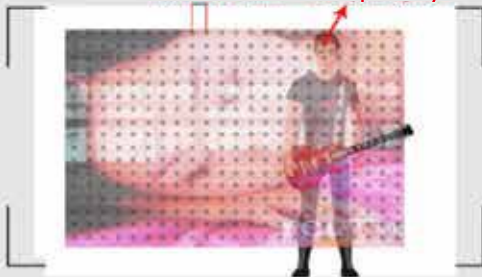
1a



Indoor  
Light ON

Outdoor  
Sunlight

Pixel Pitch 50mm Transparency 63%



1b



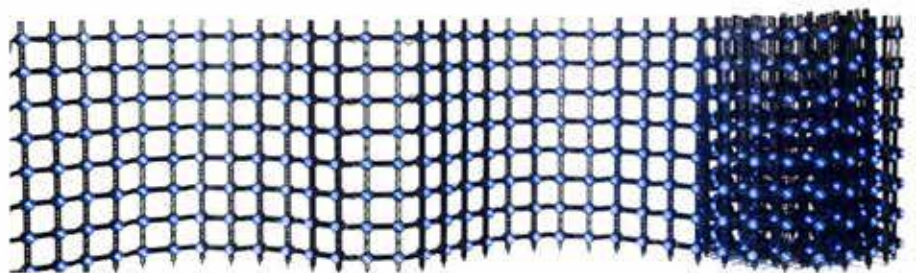
Indoor  
Light ON

Outdoor  
Sunlight



# Customized

The pixel pitch could be customized from 40mm to 300mm. The size could be customized according to your installation place.



## Ultra-Light

Owing to the characteristics of lightweight, it's popular by large stage events. The LED curtain video walls will help more for the whole stage. installation and removal is also less costly than traditional rental led screen.

## Waterproof IP66

IP 66 waterproof grade means that it can comply prevents the invasion of external dust and water. Even in severewaves or strong water spraying, the screen will not reach harmful effects. Thus, the operating life will be longer.



## Fireproof

Using the special fireproof material, the meshscreen is fire-resistant to longer its operating life. Both the cable and PC's fire rating can reach V0.



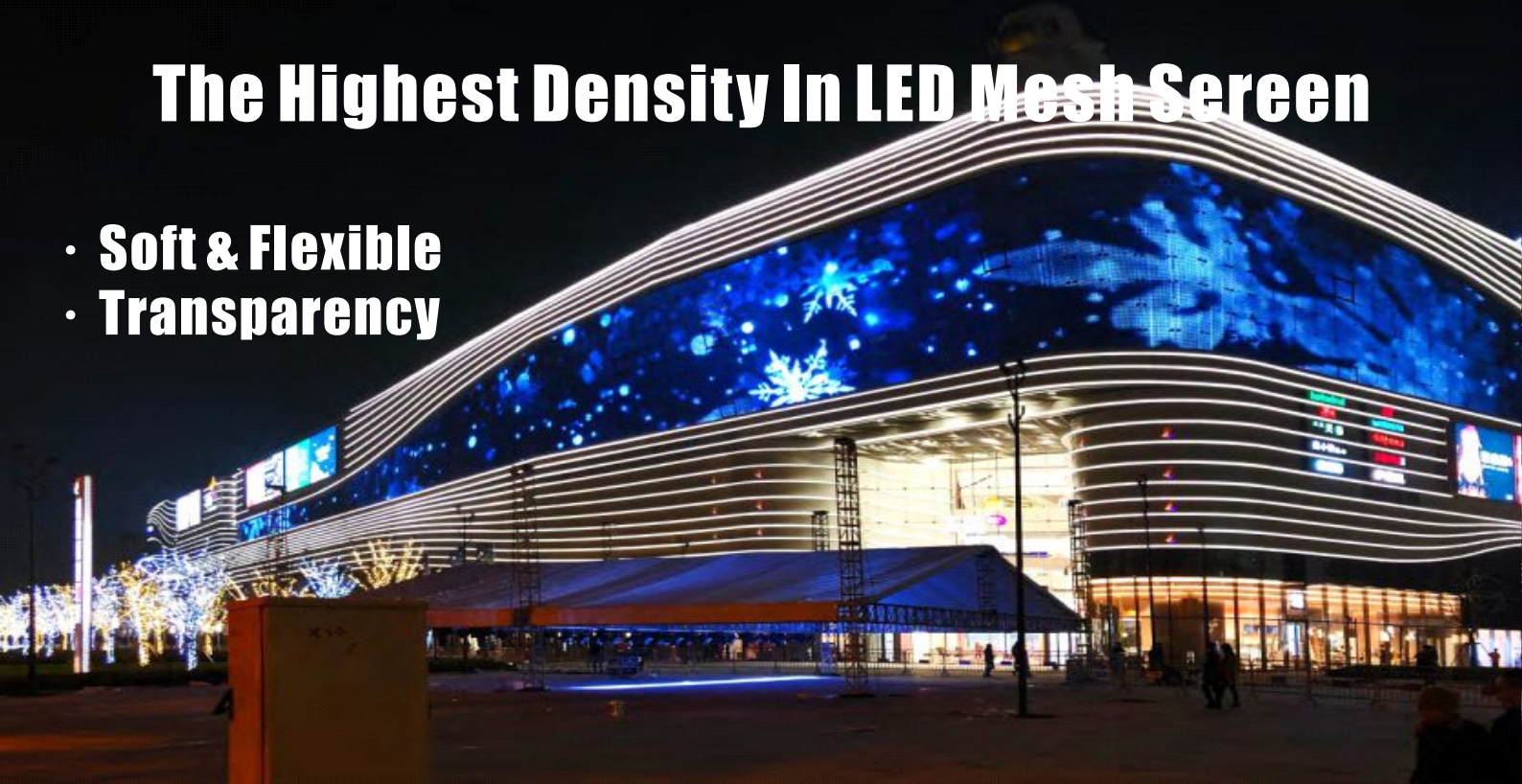
## Low installation & Maintenance costs

The modular design reduces the costs of transport and installation. It breaks through technical barriers, realizes mesh screen front service maintenance, which greatly increases the maintenance efficiency



# The Highest Density In LED Mesh Screen

- **Soft & Flexible**
- **Transparency**

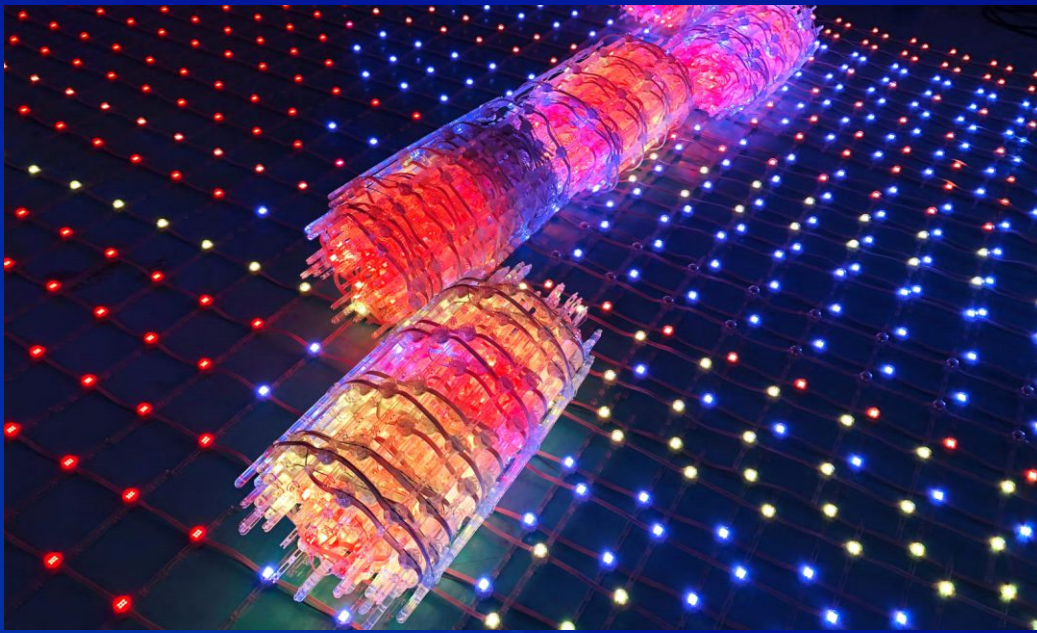


## Specification

Product Model	STC-1Dot-40	STC-1Dot-50	STC-1Dot-55	STC-1Dot-62.5	STC-1Dot-75	STC-1Dot-100
Pixel Pitch (mm)	40	50	55	62.5	75	100
Pixel Density(Dots/m <sup>2</sup> )	625	400	330	256	178	100
Brightness (Cd/m <sup>2</sup> )	1,875	1,200	1,000	768	530	300
Max Module Size(m)	0.32x13.2	0.4x16.5	0.44x18	0.5x20.6	0.6x24.8	0.4x33
Max Power Consumption (W/m <sup>2</sup> )	282	180	149	116	80	45
Avg Power Consumption (W/m <sup>2</sup> )	94	60	50	39	27	15
Transparency (%)	54	63	66	70	75	80
Screen Weight (Kg/m <sup>2</sup> )	6.3	4.26	4.2	3.25	2.74	2.3
Module Resolution	8x330Dots Max				4x330Dots Max	
Sub-Controller	640W-5.8kg, 1280W-7.2kg, 2100W-9kg					
Unit Power Consumption (W/m <sup>2</sup> )	0.45					
Dot Size	L20xW18xH14(mm) D18mm					
Driving IC	UCS5603A					
Video Source	DVI, HDMI, VGA					
LED Type	RGB 3IN1 SMD3535*1 Nationstar Golden Wire					
Viewing Angle	120°(H)/120°(V)					
Gray Scale	12bit					
Display Scale	68.7 Billion					
Refresh Rate	≥ 1920Hz					
Control System	Nova					
Signal Transmission	CAT: 80m or Fiber Optic					
Input Voltage	AC110~240V, 50/60Hz, (9DC7.5/12V)					
Working Environment	Temperature -30 C ~60 C, Humidity10%~90%RH					
IP Rating	IP 66					
Operating Life (Hrs)	≥ 100,000Hrs					

Product Model	STC-2Dot-40	STC-2Dot-50	STC-2Dot-55	STC-2Dot-62.5	STC-2Dot-75	STC-2Dot-100
Pixel Pitch (mm)	40	50	55	62.5	75	100
Pixel Density(Dots/m <sup>2</sup> )	625	400	330	256	178	100
Brightness (Cd/m <sup>2</sup> )	3,750	2,400	1,980	1,500	1,000	600
Max Module Size(m)	0.32x10	0.4x12.5	0.44x13.8	0.5x15.6	0.6x18.75	0.4x25
Max Power Consumption (W/m <sup>2</sup> )	375	240	198	154	107	60
Avg Power Consumption (W/m <sup>2</sup> )	125	80	66	52	36	20
Transparency (%)	54	63	66	70	75	80
Screen Weight (Kg/m <sup>2</sup> )	6.3	4.26	4.2	3.25	2.74	2.3
Module Resolution	8x250Dots Max				4x250Dots Max	
Sub-Controller	640W-5.8kg, 1280W-7.2kg, 2100W-9kg, 2400W-9kg					
Unit Power Consumption (W/m <sup>2</sup> )	0.6					
Dot Size	L20xW18xH14(mm) D18mm					
Driving IC	UCS5603A					
Video Source	DVI, HDMI, VGA					
LED Type	RGB 3IN1 SMD3535*2 Nationstar Golden Wire					
Viewing Angle	120°(H)/120°(V)					
Gray Scale	12bit					
Display Scale	68.7 Bilion					
Refresh Rate	≥1920Hz					
Control System	Nova					
Signal Transimission	CAT: 80m or Fiber Optic					
Input Voltage	AC110~240V, 50/60Hz, (DC12V)					
Working Environment	Temperature -30 C ~60 C , Humidity10%~90%RH					
IP Rating	IP 66					
Operating Life (Hrs)	≥100,000Hrs					

Product Model	STC-4Dot-40	STC-4Dot-50	STC-4Dot-55	STC-4Dot-62.5	STC-4Dot-75	STC-4Dot-100
Pixel Pitch (mm)	40	50	55	62.5	75	100
Pixel Density(Dots/m <sup>2</sup> )	625	400	330	256	178	100
Brightness (Cd/m <sup>2</sup> )	6,250	4,000	3,380	2,560	1,780	1,000
Max Module Size(m)	0.32x6.64	0.4x8.3	0.44x9.13	0.5x10.375	0.6x12.45	0.4x16.6
Max Power Consumption (W/m <sup>2</sup> )	563	360	297	231	160	90
Avg Power Consumption (W/m <sup>2</sup> )	188	120	99	77	53	30
Transparency (%)	54	63	66	70	75	80
Screen Weight (Kg/m <sup>2</sup> )	6.3	4.26	4.2	3.25	2.74	2.3
Module Resolution	8x166Dots Max				4x166Dots Max	
Sub-Controller	640W-5.8kg, 1280W-7.2kg, 2100W-9kg, 2400W-9kg					
Unit Power Consumption (W/m <sup>2</sup> )	0.9					
Dot Size	L20xW18xH14(mm) D18mm					
Driving IC	UCS5603A					
Video Source	DVI, HDMI, VGA					
LED Type	RGB 3IN1 SMD2727*4 Nationstar Golden Wire					
Viewing Angle	120°(H)/120°(V)					
Gray Scale	12bit					
Display Scale	68.7 Bilion					
Refresh Rate	≥1920Hz					
Control System	Nova					
Signal Transimission	CAT: 80m or Fiber Optic					
Input Voltage	AC110~240V, 50/60Hz, (DC15V)					
Working Environment	Temperature -30 C ~60 C , Humidity10%~90%RH					
IP Rating	IP 66					
Operating Life (Hrs)	≥100,000Hrs					



# Specification

Product Model	STC-6Dot-50	STC-6Dot-55	STC-6Dot-62.5	STC-6Dot-75	STC-6Dot-100
Pixel Pitch (mm)	50	55	62.5	75	100
Pixel Density(Dots/m <sup>2</sup> )	400	330	256	178	100
Brightness (Cd/m <sup>2</sup> )	6,000	4,950	3,840	2,670	1,500
Max Module Size(m)	0.4x5.8	0.44x6.38	0.5x7.25	0.6x8.7	0.4x11.6
Max Power Consumption (W/m <sup>2</sup> )	520	429	333	232	130
Avg Power Consumption (W/m <sup>2</sup> )	174	143	111	78	44
Transparency (%)	63	66	70	75	80
Screen Weight (Kg/m <sup>2</sup> )	4.26	4.2	3.25	2.74	2.3
Module Resolution	8x116Dots Max			4x116Dots Max	
Sub-Controller	640W-5.8kg, 1280W-7.2kg, 2100W-9kg, 2400W-9kg				
Unit Power Consumption (W/m <sup>2</sup> )	1.3				
Dot Size	L20xW18xH14(mm) D18mm				
Driving IC	UCS5603A				
Video Source	DVI, HDMI, VGA				
LED Type	RGB 3IN1 SMD2727*6 Nationstar Golden Wire				
Viewing Angle	120°(H)/120°(V)				
Gray Scale	12bit				
Display Scale	68.7 Billion				
Refresh Rate	≥ 1920Hz				
Control System	Nova				
Signal Transimission	CAT: 80m or Fiber Optic				
Input Voltage	AC110~240V, 50/60Hz, (DC12V)				
Working Environment	Temperature -30 C ~60 C , Humidity10%~90%RH				
IP Rating	IP 66				
Operating Life (Hrs)	≥ 100,000Hrs				

# Application

